

EAGLE EXPRESS

Email: gormandale.ps@education.vic.gov.au

Thursday, 27th February 2025



LEARNER



RESPECTFUL



SAFE

Gormandale and District Primary School fosters a community learning environment in which each and every member is nurtured to become a confident lifelong learner.



We acknowledge the Gunaikurnai people as the traditional custodians of the land upon which we meet. We pay our respects to the Elders of the past, present and future.



Principal's Report

Dear GDPS Community,

We are almost at the halfway point to the term. As of next week, our preps officially join us full time.

We have a busy week next week with our P-4 students having the opportunity to attend excursions provided by the Wellington Shire Council. Our 5/6's have an excursion set later in the term for a high school awareness day. Permission is able to be given online via compass for these events; however, permission notes are also attached to this newsletter for any consent that remains outstanding.

NAPLAN

National Assessment Program - Literacy And Numeracy (NAPLAN) preparation is underway for our grades 3 & 5 students. This week they used the online NAPLAN training platform to become familiar with the online test structure. NAPLAN will take place in week 7 from the 12-14th of March. On these days, our grade 3 & 5 students are able to enjoy a delicious and nutritious breakfast in the morning where we are able to connect and settle our emotions on the day.

I want to remind families that the NAPLAN assessment is a moment in time snapshot and not something we want our students to feel stress over. We will spend time supporting our students with what to expect on the day. If you find that your child/ren have concerns about the NAPLAN assessment, please reach out to their classroom teacher. Parents are able to access the NAPLAN public demonstration website to see the tests from a student perspective.

Facilities Update

The shade sail poles that were damaged in the strong winds last year have been replaced. This means that our new sandpit construction next to the top playground will be able to commence soon.

Let's hope this warm weather sticks around for a little longer!
Charleight Williams



WHAT'S COMING UP?

Friday 28th

Clean up Gormandale Day

Tuesday 4th

Pancake Day Breakfast

Wednesday 5th

P-2 Kids Day Out In Yarram

Thursday 6th

3-4 Environment Excursion - Yarram

GDPS Bank Details

BSB 033-222

ACC 019138

Gormandale & District PS Council

February
March






Wellbeing & Engagement Leader

MS ELRICK

Our new Playground Engagement schedule is now live! We have designed this to support student wellbeing by increasing engagement and social connection during recess and lunch breaks.

Each day, students will have the opportunity to participate in a variety of structured activities, encouraging them to be active, creative, and collaborative in the schoolyard. These activities will cater to different interests, helping children find enjoyable and inclusive ways to spend their break times. Each day provides a creative activity (recess) and an active activity (lunch).

Some examples of activities on offer include:

-  **Mellow Monday** – giant chalk on the asphalt
-  **Tennis Tuesday** – tennis games
-  **Whimsical Wednesday** – music & dress-ups
-  **Throwing Thursday** – ball games
-  **Freestyle Friday** - building & creating with different construction pieces



Our goal is to foster a positive and inclusive playground environment where all students feel supported and engaged. We encourage families to talk with their children about the activities available and help them explore new ways to enjoy their break times.

WHAT'S ON IN THE YARD?					
Time	MONDAY	TUESDAY	WEDNESDAY	THURSDAY	FRIDAY
RECESS	MELLOW MONDAY CHALK	TINKER TUESDAY LEGO	WHIMSICAL WEDNESDAY MUSIC AND MOVEMENT	THOUGHTFUL THURSDAY BUBBLES	FREESTYLE FRIDAY BUILDING AND CREATING
LUNCH	MULTI-SPORT MONDAY ATHLETICS SKILLS	TENNIS TUESDAY TENNIS	WACKY WEDNESDAY FUN ACTIVITIES	THROWING THURSDAY THROWING GAMES	FAST FEET FRIDAY FAST MOVING GAMES



FAREWELL RACHEL

It is with a heavy heart that we announce Rachel, our student wellbeing officer, will be leaving GDPS to take on a new leadership opportunity.

Rachel has been a valued member of our team, making a wonderful impact on our school community and building strong, safe connections with our students.

Rachel has done a fantastic job with establishing a brand new role for our school. While we are sad to see Rachel go, we are grateful for her dedication and wish her all the best in her next adventure.



Welcome Jenny

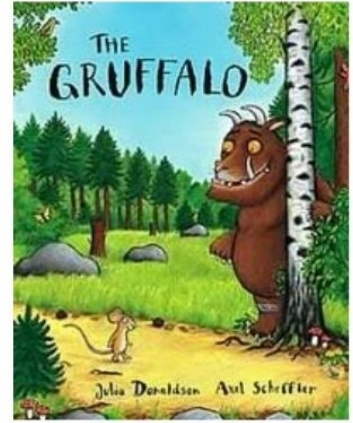
Jenny will be working with us each Wednesdays in an Education Support role as part her TAFE placement. We welcome her to GDPS and hope she enjoys her time with us. She'll gain valuable classroom experience from working with our staff and students.

JUNIOR ROOM

P/1 MS ANTHOFER & MISS DARBY

Our junior grades completed their STEM lesson outdoors this week. STEM is using science, technology, engineering and math to solve problems. Students had to create a "log pile house" for a snake based on the book "The Gruffalo"

Students could only use natural materials they found on the ground and no materials such as tape or glue.



MIDDLE ROOM

2/3/4 MISS COULTHARD

The Green Guardians in Grades 2, 3, and 4 have been doing an amazing job of keeping our classroom bins clean and tidy. They empty the bins every lunchtime and wash them out every Thursday to make sure they stay fresh and hygienic. Next week, we are excited to introduce our compost bins, which will be in all grades. We'll be putting food scraps in the worm farm and compost bin outside near the paddock. This is a big responsibility, as the students will need to wash out these bins every day to keep our classrooms free from bad smells and flies.

This work ties into our Humanities lesson this week, where we've been learning about the history of Clean Up Australia Day, which was originally called "Clean Up the Harbour." It's a perfect fit for our Green Guardians, who are learning the importance of taking care of our environment!

Great work, Green Guardians!



SENIOR ROOM

5/6 MRS JUDKINS

Maths: Cross Sections



This past fortnight in math we have been looking at cross sections of 3D shapes. Students made 3D shapes with magic sand and different shape moulds, and then cut them up and sliced them all different ways to find what 2D shapes their cross sections made.



Maths: Types of Triangles

Students went on a 'treasure hunt' around the school, answering and identifying triangles by sides and angles.



Another puzzle complete from the boys!



ASSEMBLY AWARD RECIPIENTS



WANTED ITEMS FOR STEM

Cardboard Boxes, Tubes & Trays all welcome

MARC Van

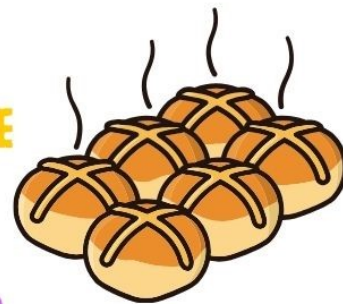
It's great to have the MARC van back at Gormandale & District P.S for another year. We are really lucky to have some great Library Leaders in Elsie and Florence. This week we celebrated 'Library Lovers Week'. Students created a heart picture with images or colours from their favourite books.



by Jess



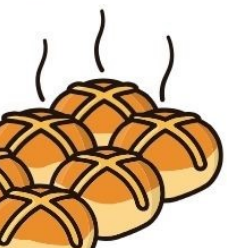
MISSEN LINK
3/34 STRATTON DRIVE
TRARALGON 3844



Easter Bun-raiser is on again!

Every packet purchased raises \$2 towards our student toilet upgrade.

Order form is attached or available at the office.



Choose from: Traditional Fruit, **Triple Choc**, Choc Chip, **Caramel with White Choc Chip**, Strawberry Choc Chip, **Raspberry White Choc Chip**, Peppermint Choc Chip, **Custard Filled** or Jam filled



HAPPY PANCAKE DAY

Let's make some delicious food
Come and join our school!



4TH
MARCH
2025



berry



honey



GOLD
COIN
\$



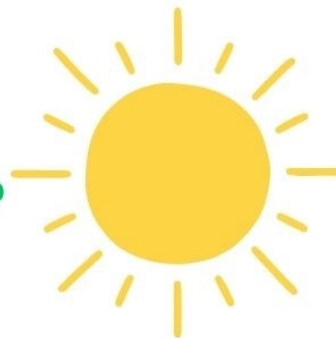
JOIN NOW

START: 8:40AM

FINISH: 9:10AM

WE ARE RAISING MONEY FOR OUR SCHOOL!
PLEASE PRE ORDER BY 28TH FEBUARY
SEE ATTACHED FORM





**ARE YOU HOT
AND
THIRSTY???**



**Come get some icy
poles!**

ICY POLES!!!

**\$1 each on Fridays in the
undercover area at
lunchtime**



**SUGAR
FREE
OPTIONS
AVAILABLE**

